

## Performance Analysis and Benchmarking - Contact, Referrals & Assessments and Child

### Contents

#### Contacts, Referrals and Assessments

- Op504 The number of child contacts received
- Op410 The number of referrals to children's social care
- Op410a The rate of referrals to children's social care per 10,000 pop
- Op368 Percentage of referrals to children's social care going on to initial assessment
- Op383 Re-referrals within 12 months of the previous referral
- HY59 Percentage of initial assessments for children's social care carried out within 10 working days of referral
- Op60 Percentage of core assessments for children's social care that were carried out within 35 working days

#### Child Protection

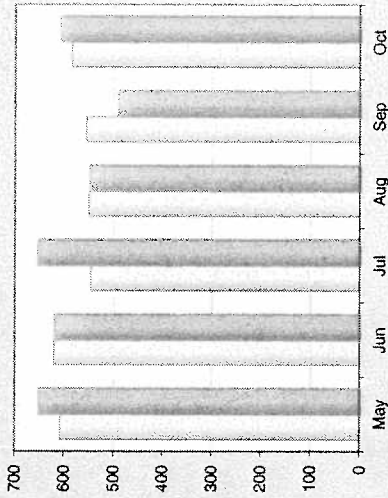
- Op388 Children subject to a child protection plan
- Op 411 Children Becoming Subject to a CP plan in the period
- Op 413 Children Ceasing Subject to a CP plan in the period
- Op421 Children moving to Haringey on a CP Plan
- Op422 Children moved out of Haringey on a CP Plan
- HY64 Child Protection Plans lasting 2 years or more
- Op 365 Percentage of children becoming the subject of Child Protection Plan for a second or subsequent time
- Op380 Child Protection Visits
- Op381 Children in Need Visits

Where available, benchmarking is provided for England, London and/or Haringey's Statistical Neighbours. Haringey's Statistical Neighbours group is defined by Ofsted based on socio-demographic information relating specifically to Children's Services and comprises Croydon, Greenwich, Hackney, Hammersmith and Fulham, Islington, Lambeth, Lewisham, Southwark, Waltham Forest and Wandsworth. The averages provided for benchmarking in this report are simple means.

**Children and Families - Contact, Referrals and Assessments**

**Op504 The number of child contacts received**

Recent trend (last 6 months)	Key	Traffic Light						Data Only
		May-12	Jun-12	Jul-12	Aug-12	Sep-12	Oct-12	
Haringey		651	619	653	548	491	608	
Previous Year	Key	May-11	Jun-11	Jul-11	Aug-11	Sep-11	Oct-11	
Haringey (previous year)		608	620	546	550	555	585	

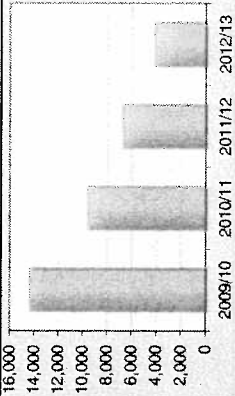


**Performance Comment**

- There have been 4,143 contacts in the period April to October compared with only 3,945 this time last year.

**Service Comment**

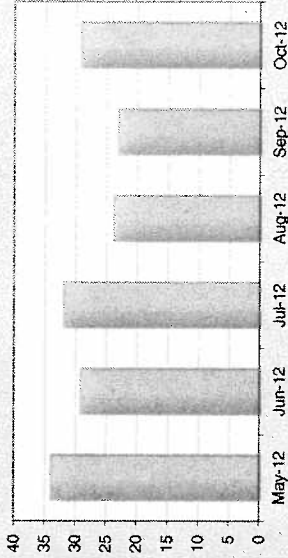
The decrease in contacts last month was due to seasonal fluctuation in schools being on holiday. They have now returned and therefore contacts have increased.



Long term trend (last 6 years)	Key	Traffic Light						Data Only
		2007/08	2008/09	2009/10	2010/11	2011/12	2012/13	
Haringey		-	-	14,355	9,556	6,722	4,143	

Op410 The number of referrals to children's social care  
 OP410: The rate of referrals to children's social care per 10,000 pop

Recent trend (last 6 months)	Key	May-12	Jun-12	Jul-12	Aug-12	Sep-12	Oct-12	Traffic Light
Haringey Number	N/A	196	168	184	137	133	168	Data Only
Haringey Rate		34	29	32	24	23	29	



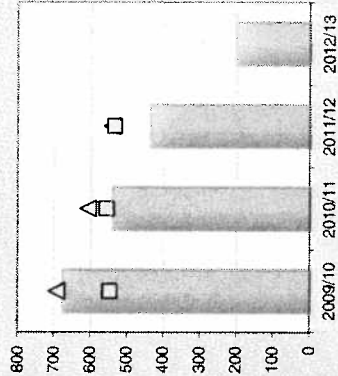
**Performance Comment**

- The October year to date total is 1,164 compared with 1,344 last year.
- The number and rate of referrals has reduced over recent years.
- Haringey's rate (per 10,000 population) of referrals is historically below that of statistical neighbours.

**Service Comment**

Robust screening continues to signpost contacts appropriately. The increase in referrals reflects the return of the schools from school holidays.

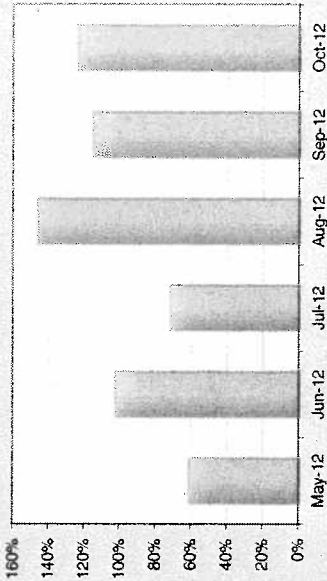
Long term trend (last 6 years)	Key	2007/08	2008/09	2009/10	2010/11	2011/12	2012/13	Traffic Light
Haringey Number	N/A	-	-	3324	2658	2509	1164	Data Only
Haringey Rate		-	-	677	541	436	202	
Statistical Neighbours Rate	Δ	723	647	694	607	541	-	
England Rate	□	490	497	548	557	534	-	



### Op368 Percentage of referrals to children's social care going on to initial assessment

The calculation is based on the number of children who had initial assessments completed divided by the number of referrals received in the month. The initial assessment may have commenced from a referral started in a previous month so the indicator can sometimes exceed 100%.

Recent trend (last 6 months)	Key	May-12	Jun-12	Jul-12	Aug-12	Sep-12	Oct-12	Traffic Light
Haringey		61%	102%	72%	146%	115%	124%	Data Only



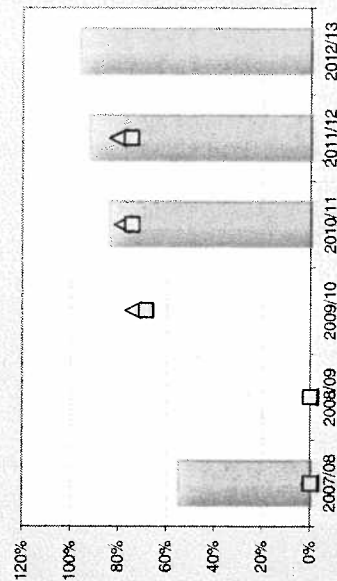
### Performance Comment

- The monthly calculation is based on the number of completed initial assessments divided by the number of referrals received in the month, however the initial assessment may have commenced from a referral started in a previous month. This means that sometimes this indicator can exceed 100%. Unusually this has been the case for 4 of the last 5 months.
- The 2011/12 Children in Need Census found that 92% of children went onto an initial assessment in Haringey compared to 75% for England.
- The 2011/12 Statistical Neighbour average was 81%

### Service Comment

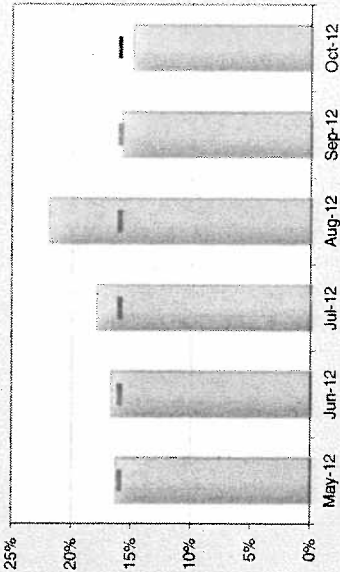
The high conversion from referral to IA is due to robust screening and the Multi Agency Safeguarding Hub (MASH) process.

Long term trend (last 6 years)	Key	2007/08	2008/09	2009/10	2010/11	2011/12	2012/13	Traffic Light
Haringey		55%	-	-	84%	92%	96%	Data Only
Statistical Neighbours	△	-	-	74%	79%	81%	-	
London	◆	-	-	-	-	77%	-	
England	□	-	-	69%	75%	75%	-	



**Op383 Re-referrals within 12 months of the previous referral**

Recent trend (last 6 months)	Key	#####	Jun-12	Jul-12	Aug-12	Sep-12	Oct-12	Traffic Light
Haringey		16%	17%	18%	22%	16%	15%	<b>Green</b>
Haringey Target	■	16%	16%	16%	16%	16%	16%	



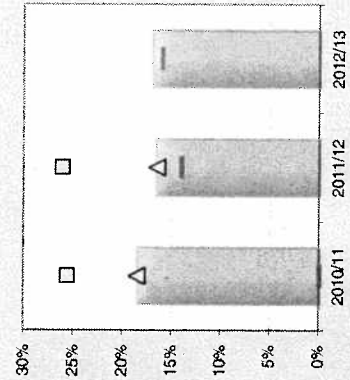
**Performance Comment**

- Levels are similar to those reported by our statistical neighbours but lower than those reported nationally in 2011/12.
- Percentages relate to 25 re-referrals out of 168 referrals in October

**Service Comment**


Re referrals are scrutinised monthly and trends noted month on month.

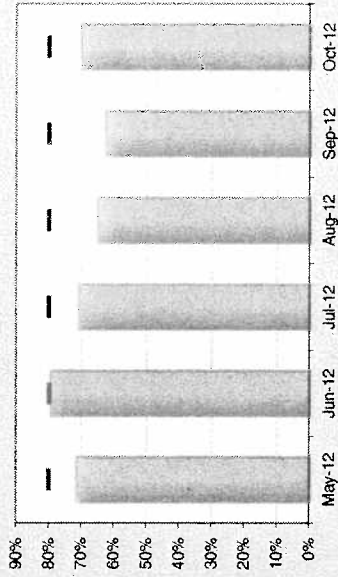
Long term trend (last 6 years)	Key	2007/08	2008/09	2009/10	2010/11	2011/12	2012/13	Traffic Light
Haringey		-	-	-	19%	17%	17%	<b>Amber</b>
Haringey Target	■	-	-	-	-	14%	16%	
Statistical Neighbours	△	15%	17%	-	19%	17%	-	
England	□	24%	23%	-	26%	26%	-	



**HY59 Percentage of initial assessments for children's social care carried out within 10 working days of referral**

In future periods the distribution of working days taken from referral to assessment completion will be measured and reported, in line with the findings of the Munro Review. The DFE intends to publish this data, based on CIN census returns, in October/November 2012.

Recent trend (last 6 months)	Key	May-12	Jun-12	Jul-12	Aug-12	Sep-12	Oct-12	Traffic Light
Haringey		72%	80%	71%	65%	63%	70%	Red 
Haringey Target	-	80%	80%	80%	80%	80%	80%	




**Performance Comment**

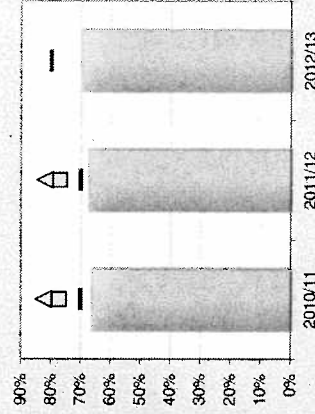
- Performance on initial assessments carried out in 10 days improved in October but remains below the revised 80% target.

- Current performance levels are below those of our statistical neighbours (82% in 2011/12).

**Service Comment**

Work continues across the service to improve this figure which it has over the last month. The number of incomplete assessments has reduced further from 12 last month to 2 by mid November which should improve performance further in November.

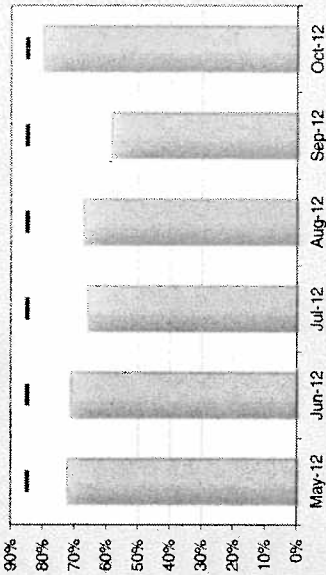
Long term trend (last 6 years)	Key	2007/08	2008/09	2009/10	2010/11	2011/12	2012/13	Traffic Light
Haringey		-	-	-	66%	67%	70%	Red 
Haringey Target	-	-	-	-	70%	70%	80%	
Statistical Neighbours	Δ	-	-	82%	83%	82%	-	
England	□	-	-	76%	77%	77%	-	





**Op60 Percentage of core assessments for children's social care that were carried out within 35 working days**

Recent trend (last 6 months)	Key	May-12	Jun-12	Jul-12	Aug-12	Sep-12	Oct-12	Traffic Light
Haringey		72%	71%	66%	67%	58%	80%	Red
Haringey Target	—	85%	85%	85%	85%	85%	85%	



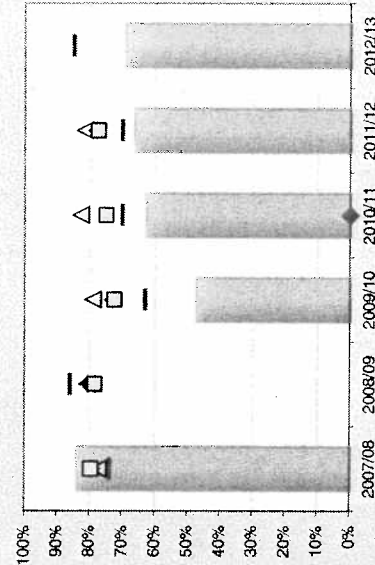
**Performance Comment**

- Performance on core assessments completed in timescale is below that of our statistical neighbours and below target but a big improvement on the previous months performance.

**Service Comment**

The 22% improved performance reflects the Service continued commitment to ensuring assessments are completed in a timely manner. The provision of a mid week performance tool has assisted in pin pointing performance further.

Long term trend (last 6 years)	Key	2007/08	2008/09	2009/10	2010/11	2011/12	2012/13	Traffic Light
Haringey		84%	-	47%	63%	66%	69%	Red
Haringey Target	—	74%	86%	63%	70%	70%	85%	
Statistical Neighbours	△	77%	81%	79%	83%	82%	-	
London	◆	79%	80%	73%	-	78%	-	
England	□	80%	78%	72%	75%	77%	-	



## Children and Families - Child Protection

Op388 Children subject to a child protection plan  
 OP388: The rate of Children Subject to a child protection plan per 10,000 pop

Recent trend (last 6 months)	Key	May-12	Jun-12	Jul-12	Aug-12	Sep-12	Oct-12	Traffic Light
Haringey Number		283	299	315	225	328	327	Data Only
Haringey Rate per 10,000		55	52	55	39	57	57	

### Performance Comment

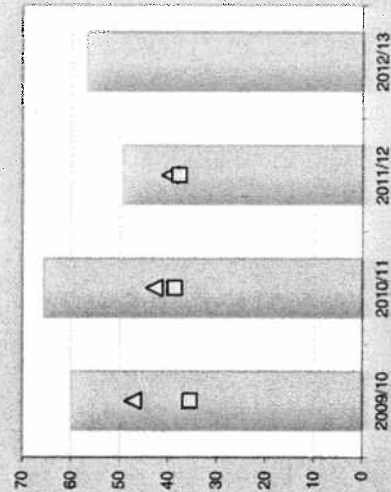
- This is equivalent to a rate of 57 per 10,000 population which is more than a third higher than our statistical neighbour average.

### Service Comment

The service is aware of this issue. Quality control is in place via CPA consultation and review. Where CIN plans are appropriate these are implemented.



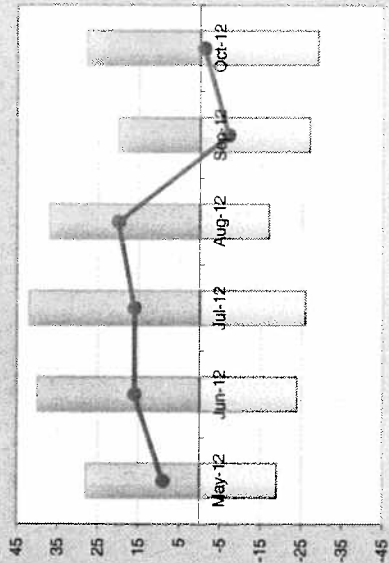
Long term trend (last 6 years)	Key	2007/08	2008/09	2009/10	2010/11	2011/12	2012/13	Traffic Light
Haringey Number	N/A	232	179	294	320	284	327	Data Only
Statistical Neighbours Number		188	212	241	228	229	-	
Haringey Rate per 10,000		-	-	60	66	49	57	
Statistical Neighbours Rate per 10,000	Δ	38	42	47	43	40	-	
England Rate per 10,000	□	27	31	36	39	38	-	





OP 411 Children Becoming Subject to a child protection plan in the period  
 OP 413 Children Ceasing Subject to a child protection plan in the period

Recent trend (last 6 months)	Key	Traffic Light					
		May-12	Jun-12	Jul-12	Aug-12	Sep-12	Oct-12
Haringey (becoming)		28	40	42	37	20	28
Haringey (ceasing)		-19	-24	-26	-17	-27	-29
<b>Haringey Net Increase</b>	<b>●</b>	<b>9</b>	<b>16</b>	<b>16</b>	<b>20</b>	<b>-7</b>	<b>-1</b>



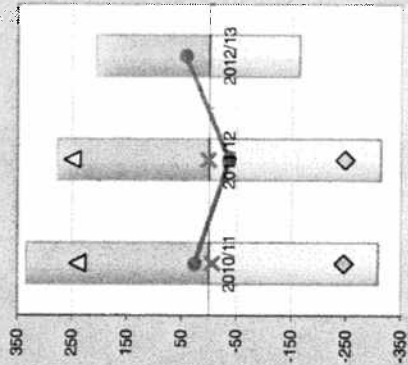
**Performance Comment**

- There has been a considerable increase in the number of children becoming subject to a child protection plan (207 in the year to October compared with 152 this time last year)
- There has also been a significant decrease in the number of children ceasing to be subject to a plan (162 down from 203 this time last year).

**Service Comment**

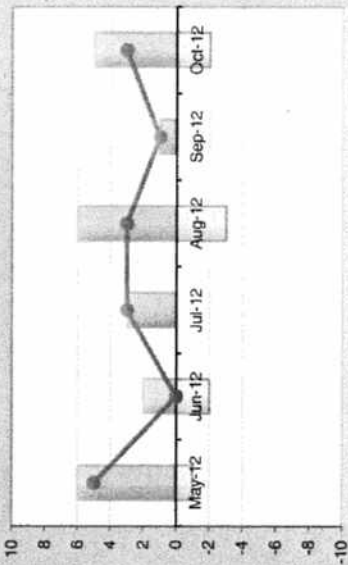
as above

Long term trend (last 6 years)	Key	Traffic Light											
		2007/08	2008/09	2009/10	2010/11	2011/12	2012/13	Data Only					
Haringey (becoming)		-	-	-	334	277	207						
Haringey (ceasing)		-	-	-	-308	-313	-164						
<b>Haringey Net Increase</b>	<b>●</b>	-	-	-	26	-36	43						
Stat. Neighbours (becoming)	△	195	220	261	240	250	-						
Stat. Neighbours (ceasing)	◇	-183	-194	-226	-246	-248	-						
<b>Statistical Neighbours Net Increase</b>	<b>X</b>	13	26	35	-6	2	-						



Op421 Children moving to Haringey on a child protection plan  
 Op422 Children moved out of Haringey on a child protection plan

Recent trend (last 6 months)	Key	May-12	Jun-12	Jul-12	Aug-12	Sep-12	Oct-12	Traffic Light
Haringey (moving in)		6	2	3	6	1	5	Data Only
Haringey (moving out)		-1	-2	0	-3	0	-2	
<i>Haringey Net Increase</i>	▲	5	0	3	3	1	3	

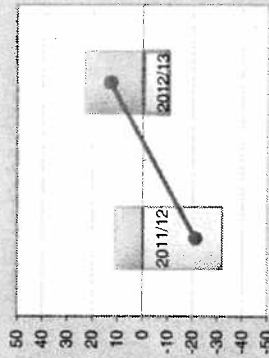


Performance Comment

Service Comment

All requests for transfer in Conferences are robustly screened by the Head of Service/DHOS for appropriate threshold. Due to housing fluctuations, it is expected there may be an increase in requests for cases to transfer from other Boroughs where housing options may not be available.

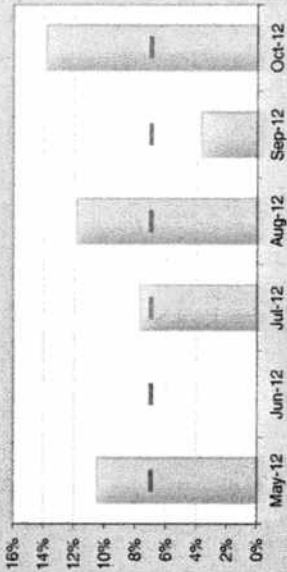
Long term trend (last 6 years)	Key	2007/08	2008/09	2009/10	2010/11	2011/12	2012/13	Traffic Light
Haringey (moving in)		-	-	-	-	11	23	Data Only
Haringey (moving out)		-	-	-	-	-32	-10	
<i>Haringey Net Increase</i>	▲	-	-	-	-	-21	13	



### HY64 Child Protection Plans lasting 2 years or more

This indicator measures the percentage of children who ceased to be subject to a child protection plan within the period who had been subject to a plan for two or more years. This reflects the underlying principle that professionals should be working towards specified outcomes which, if implemented effectively, should lead to all children not needing to be the subject of a Child Protection Plan within a maximum of two years. Performance should be looked at alongside that of children becoming the subject of a Child Protection Plan for a second and subsequent time.

Recent trend (last 6 months)	Key	May-12	Jun-12	Jul-12	Aug-12	Sep-12	Oct-12	Traffic Light
Haringey		10.5%	-	7.7%	11.8%	3.7%	13.8%	Amber
Haringey Target	-	7.0%	7.0%	7.0%	7.0%	7.0%	7.0%	



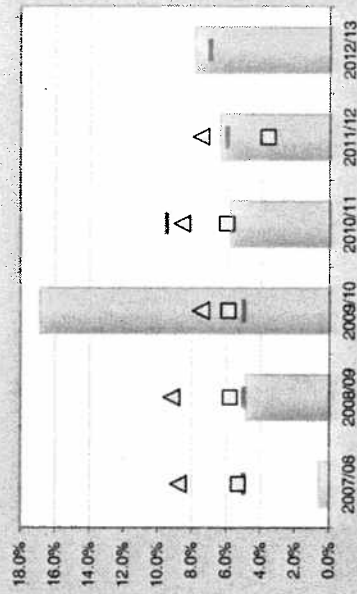
### Performance Comment

- The year to date position is near the 7% target and compares favourably to our statistical neighbour average.

### Service Comment

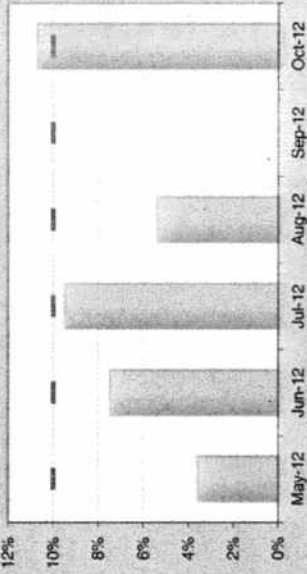
Senior managers are aware that this performance indicator has risen in the past month. Whilst there are some cases in which a Child Protection plan for this length of time is an appropriate decision making process for an individual family, managers are developing a system to ensure that child protection plans are reviewed in detail when a plan has been in place for 18 months.

Long term trend (last 6 years)	Key	2007/08	2008/09	2009/10	2010/11	2011/12	2012/13	Traffic Light
Haringey		0.6%	4.9%	16.9%	5.8%	6.4%	7.9%	Amber
Haringey Target	-	5.0%	5.0%	5.0%	9.5%	6.0%	7.0%	
Statistical Neighbours	Δ	8.8%	9.2%	7.5%	8.6%	7.5%	-	
London	◆	6.7%	7.5%	-	-	5.5%	-	
England	□	5.3%	5.8%	5.9%	6.0%	3.6%	-	



**Op 365 Percentage of children becoming the subject of Child Protection Plan for a second or subsequent time**

Recent trend (last 6 months)	Key	May-12	Jun-12	Jul-12	Aug-12	Sep-12	Oct-12	Traffic Light
Haringey		3.6%	7.5%	9.5%	5.4%	-	10.7%	<b>Green</b> ●
Haringey Target	—	10%	10%	10%	10%	10%	10%	

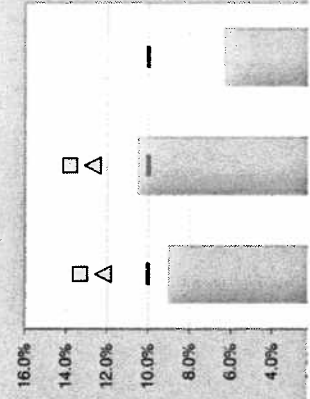


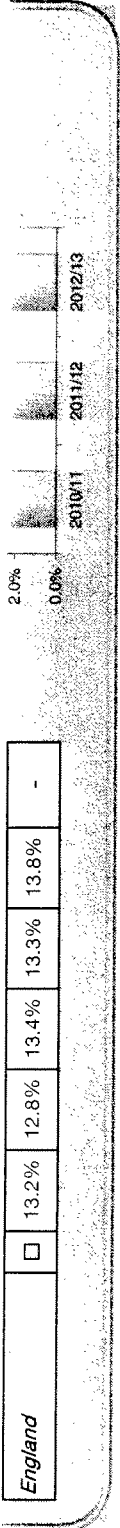
**Performance Comment**

**Service Comment**

Senior Managers are aware of the recent upward movement in this performance indicator. A number of individual cases have been subject of review, and the outcome in some of these cases has been a child protection conference being convened, as part of the casework improvement strategy of this case. Senior managers would also note that this performance indicator is likely to be understated on a national basis as it does not take into account a significant number of cases in which a child protection plan has previously been in place in another local authority, and the family have moved to a new local authority, and a child protection plan is instigated in the new authority as well. This rise is linked to robust auditing of cases where thresholds for CIN plans have been reviewed and the need for a child protection conference has been considered as necessary.

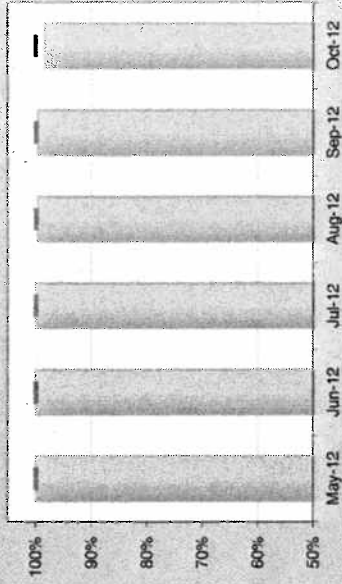
Long term trend (last 6 years)	Key	2007/08	2008/09	2009/10	2010/11	2011/12	2012/13	Traffic Light
Haringey		-	-	-	9.0%	10.5%	6.3%	<b>Green</b> ●
Haringey Target	—	10.0%	10.0%	10.0%	10.0%	10.0%	10.0%	
Statistical Neighbours	△	13.7%	12.1%	13.5%	12.2%	12.7%	-	
London	◆	12.2%	11.5%	-	-	11.4%	-	





**Op367 Percentage of child protection cases which were reviewed within required timescales**

Recent trend (last 6 months)	Key	May-12	Jun-12	Jul-12	Aug-12	Sep-12	Oct-12	Traffic Light
Haringey		100%	100%	100%	100%	100%	98%	Green
Haringey Target	-	100%	100%	100%	100%	100%	100%	

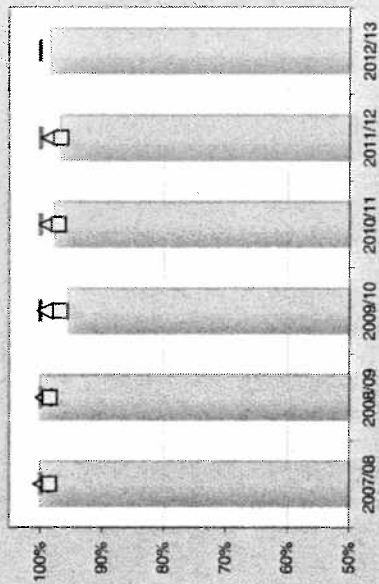


**Performance Comment**

**Service Comment**

Senior Managers are aware of the 2% decline in this performance indicator after being at 100% for some months. Senior managers look at all cases out of time and seek to learn any case specific or service wide lessons from this instance. One case relates to a family who left the country and then returned, the other was an error of an agency chair who is no longer with us.

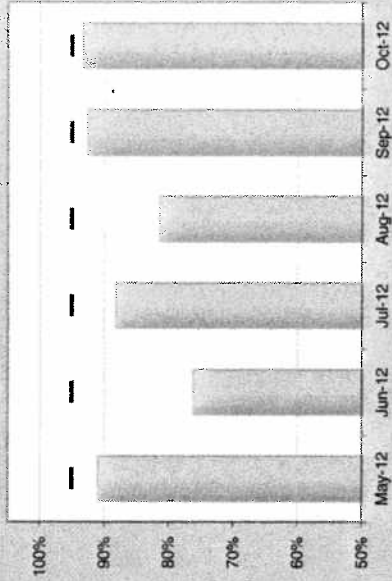
Long term trend (last 6 years)	Key	2007/08	2008/09	2009/10	2010/11	2011/12	2012/13	Traffic Light
Haringey		100%	100%	96%	98%	97%	98%	Green
Haringey Target	-	100%	100%	100%	100%	100%	100%	
Statistical Neighbours	△	100%	100%	99%	99%	99%	-	
London	◆	99%	100%	-	-	98%	-	
England	□	99%	99%	97%	97%	97%	-	





**Op380 Child Protection Visits**

Recent trend (last 6 months)	Key	May-12	Jun-12	Jul-12	Aug-12	Sep-12	Oct-12	Traffic Light
Haringey		91%	76%	88%	81%	93%	93%	Amber
Haringey Target	■	95%	95%	95%	95%	95%	95%	<input type="radio"/>



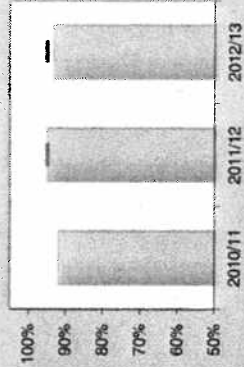
**Performance Comment**

Sustained improvement in child protection visits with performance just short of the 95% target.

**Service Comment**

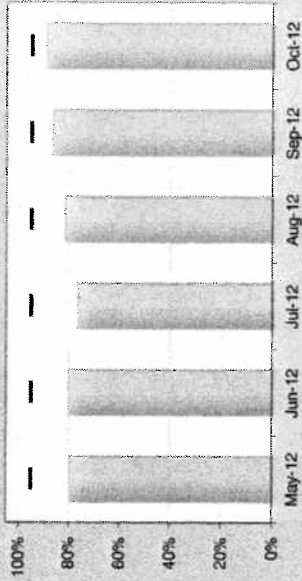
Sustained improvements – in line with the focus within the service on frequency and quality of visiting and visit recording. – continued improvement in this area is being worked towards

Long term trend (last 6 years)	Key	2007/08	2008/09	2009/10	2010/11	2011/12	2012/13	Traffic Light
Haringey		-	-	-	92%	95%	93%	Amber
Haringey Target	■	-	-	-	-	95%	95%	<input type="radio"/>



**Op381 Children in Need Visits**

Recent trend (last 6 months)	Key	May-12	Jun-12	Jul-12	Aug-12	Sep-12	Oct-12	Traffic Light
Haringey	■	80%	80%	76%	82%	87%	89%	Red ●
Haringey Target	■	95%	95%	95%	95%	95%	95%	



**Performance Comment**

- Although below target performance in 2011/12 peaked at 81% and it has been above this level in recent months.  
 - Best performance of the year so far.

**Service Comment**

Sustained improvements – in line with the focus within the service on frequency and quality of visiting and visit recording. – continued improvement in this area is being worked towards. The percentage increase is as a result of a piece of work undertaken by Head of Service and it is envisaged that this will move us nearer to the target next month.

Long term trend (last 6 years)	Key	2007/08	2008/09	2009/10	2010/11	2011/12	2012/13	Traffic Light
Haringey	■	-	-	-	69%	81%	89%	Red ●
Haringey Target	■	-	-	-	-	95%	95%	

